

Sea Ray 



SUNDANCER | FLY | VENTURE

THE MOMENTS WE REMEMBER

...didn't happen in front of a computer or on the couch. The moments we remember are filled with open sky, streaming sunlight, and the knowledge that you've done something right. Yes, happiness takes work. Fulfillment often takes planning. But once you are there—once you are basking in the warmth of the sun and the laughter of those you love—there isn't a word for that feeling. Give yourself a lifetime of moments to remember.



SEA RAY® SUNDANCER, FLY & VENTURE

THE SEA RAY
STORY

08

Premium-quality boats for enhanced living. That's the Sea Ray difference owners have enjoyed since 1959.

08 *The Sea Ray Story*

SPORT
CRUISERS

12

The Sport Cruiser lineup is the Sea Ray signature and for good reason. Blending amenities with style, Sea Ray's Sport Cruisers rule the water.

12 *260 Sundancer®*

18 *280 Sundancer*

24 *310 Sundancer*

30 *330 Sundancer*

36 *350 Sundancer*

42 *370 Sundancer*

48 *370 Venture®*

SPORT YACHTS
AND
YACHTS

54

Sea Ray's selection of Sport Yachts and Yachts combines memorable journeys with unparalleled accommodations.

54 *410 Sundancer*

62 *450 Sundancer*

70 *470 Sundancer*

78 *510 Sundancer*

88 *510 Fly®*

98 *540 Sundancer*

OPTIONS
AND
SPECS

110

No two journeys are alike. Explore the possibilities of customization and personalize your voyage.

112 *Features and Options*

116 *Fabrics and Finishes*

122 *Propulsion*

124 *Engine Specifications*

126 *Specifications*

132 *Sport Boat Lineup*

134 *L-Class® Lineup*

A NEW DAY DAWNS

Morning's stillness invites renewal, with serenity and first light signaling the start of a new day. And somewhere between opening your eyes and that first sip of coffee, you realize: anything is possible today. And this is a good start.





TIME WAITS FOR NO ONE

The people we surround ourselves with, the places we frequent—these tell our story. When the who and the where create the perfect why, the clock's ticking falls silent and the sunset lasts just a little longer.



DEFINE YOUR NOW

Breathe deeply and imagine the memories you've not yet created. How will you bring them to life? A Sea Ray is a beautiful instrument to bend the universe to your purpose and decorate it with the stuff of dreams.



THE SEA RAY STORY

From its very first boat in 1959 to each of those rolling off the line today, Sea Ray has always offered a bold vision of what boating can be and brought that vision to life with the finest craftsmanship, an engaging ownership experience and unparalleled support. Sea Ray owners enjoy the satisfaction of achieving the well-lived life on the water.



CRAFTSMANSHIP

A Sea Ray® boat is a work of relentless commitment. Every stitch of upholstery, every arch and spoiler, every inch of hardware has to be just so. It's this obsession with the details that shapes our demanding standards for quality. From wood components fabricated in-house to laser-cut and hand-finished upholstery, Sea Ray boats combine the mastery of craftsmen with the precision of industry-leading technology for a caliber of construction you won't find anywhere else. It's a unique approach that carries through every step of the production process — and the resulting fit, finish and styling achieves a level of sophistication you can feel. It's why Sea Ray is the Most Awarded Boat Brand. Ever.



VISION

Sea Ray® has always been known to push the envelope. Our boats were among the first of their kind to use fiberglass and other high-tech composite materials that would go on to become standards in the industry. Our Next Wave initiative is a commitment to develop and champion new technologies and design innovations like Quiet Ride™, SkyFlow™ and Concealed Outboard Propulsion™ with the goal of completely reimagining the boating experience. In fact, Sea Ray has one of the largest patent portfolios in the global marine community. This forward-thinking, cutting-edge, sky's-the-limit approach ensures you get the best of the best, even when the rest of the world hasn't even heard of it... yet.



SUPPORT

From prototype to testing to construction, every Sea Ray® is designed to deliver unmatched reliability with zero room for compromise. Only the finest quality materials and components are used, and Sea Ray stands behind each model with some of the industry's best warranties. Owners enjoy an unmatched level of customer service from the most decorated network of dealers in the industry. All of these efforts exist to ensure your Sea Ray outperforms your expectations at every turn.



LIFESTYLE

Own a boat, and you open up your life to a world of new possibilities. Own a Sea Ray®, and you can watch as those possibilities flourish into cherished moments. Owning a Sea Ray is an experience all its own, with exclusive social events, premium offers and participation in a community of like-minded boaters. It is complemented further by membership in the Sea Ray Owners Club*. Simply ask any Sea Ray owner, and they'll tell you. Owning a Sea Ray isn't just about style, it's about lifestyle.

**Only available in the U.S. and Canada*



260

SUNDANCER®

LENGTH: 26' 7" / 8.10 m | BEAM: 8' 6" / 2.59 m
WEIGHT: 6,667 lb / 3,024 kg | FUEL: 69 gal / 261 L



260 SUNDANCER®



FEATURES

- Flexible cockpit layout available with or without cockpit wetbar
- Spacious cockpit seating with convertible helm and aft seats
- Streamlined hull for exceptional stability and maneuverability
- Standard integral swim platform
- Sleeping accommodations for four
- Increased natural lighting with skylights and expansive hullside windows
- Reduced bow rise, improved stability and lower speed with optional Dynamic Running Surface™

To see all available fabrics and finishes packages, visit the Sport Cruisers Fabrics, Finishes & Canvas section on page 116.



280

SUNDANCER®

LENGTH: 28' 8" / 8.74 m | BEAM: 8' 10" / 2.69 m
WEIGHT: 8,211 lb / 3,724 kg | FUEL: 85 gal / 322 L



280 SUNDANCER®



FEATURES

- Classic fiberglass arch styling
- Trendsetting interior with elegant colors and textures
- Power options up to a 380-HP V-8 MerCruiser® engine
- Rotating and convertible helm seat with curved portside lounge
- Sleeping accommodations for four
- Increased natural lighting with new hullside windows
- Reduced bow rise, improved stability and lower planing speed with optional Dynamic Running Surface™
- Fold-down transom seat and sunpad

To see all available fabrics and finishes packages, visit the Sport Cruisers Fabrics, Finishes & Canvas section on page 116.





310

SUNDANCER®

LENGTH: 31' 0" / 9.45 m | BEAM: 10' 0" / 3.05 m
WEIGHT: 11,630 lb / 5,275 kg | FUEL: 125 gal / 473 L



310 SUNDANCER®



FEATURES

- Elegant interior with elegant colors and textures
- Twin engine power options up to 300-HP V-8 MerCruisers® available
- Available Axis® control for easy docking and precise slow-speed maneuvering
- Rotating convertible double helm seat
- Fold-down transom seat and sunpad
- Convertible dinette enables overnight accommodations for six
- Standard interior U-shape seating or optional V-berth bed to suit individual cruising lifestyles

To see all available fabrics and finishes packages, visit the Sport Cruisers Fabrics, Finishes & Canvas section on page 116.



Optional V-berth configuration shown.

330

SUNDANCER®

LENGTH: 33' 4" / 10.16 m | BEAM: 10' 5" / 3.18 m
WEIGHT: 13,334 lb / 6,048 kg | FUEL: 200 gal / 757 L



330 SUNDANCER®



FEATURES

- Available Axis® control for easy docking and precise slow-speed maneuvering
- Available plush foredeck sunpad
- Optional aft-facing seat accommodates two
- Convertible salon sofa and mid-berth conversation zone enable overnight accommodations for six
- Gourmet galley with abundant storage and a host of amenities
- Increased natural lighting with new hullside windows

To see all available fabrics and finishes packages, visit the Sport Cruisers Fabrics, Finishes & Canvas section on page 116.





350

SUNDANCER®

LENGTH: 35' 0" / 10.67 m | BEAM: 11' 4" / 3.45 m
WEIGHT: 15,780 lb / 7,158 kg | FUEL: 230 gal / 871 L



350 SUNDANCER®



FEATURES

- Enlarged hullside windows
- Elegant cockpit, interior materials and finishes
- Twin sterndrive or V-drive engine options for a variety of cruising preferences
- Available Axius® control for easy docking and precise slow-speed maneuvering
- Multiple shade options for warming natural light or relaxing shade
- Optional extended swim platform
- Multiple interior layouts for the bow (V-berth or U-shaped seating) and midcabin (queen, twin berths or conversation zone) to accommodate everyone's needs
- Optional transom gourmet station enhances cockpit entertaining
- Available twin Cummins® or Yanmar® diesel power expands your cruising options

To see all available fabrics and finishes packages, visit the Sport Cruisers Fabrics, Finishes & Canvas section on page 116.



370

SUNDANCER®

LENGTH: 37' 6" / 11.43 m | BEAM: 12' 0" / 3.66 m
WEIGHT: 18,064 lb / 8,194 kg | FUEL: 250 gal / 946 L



370SUNDANCER®



FEATURES

- Elegant cockpit and interior materials and finishes
- Twin sterndrive or V-drive engine options for a variety of cruising preferences
- Available Axis® control for easy docking and precise slow-speed maneuvering
- Choose fold-away aft-facing seats or the transom gourmet station to configure the boat for your entertaining needs
- Convertible salon and aft seating enable overnight accommodations for six
- Optional berth enclosure provides additional privacy

To see all available fabrics and finishes packages, visit the Sport Cruisers Fabrics, Finishes & Canvas section on page 116.





370

VENTURE®

LENGTH: 37' 2" / 11.33 m | BEAM: 11' 3" / 3.43 m
WEIGHT: 15,840 lb / 7,185 kg | FUEL: 222 gal / 840 L





FEATURES

- Optional joystick piloting for Verado engines provides easy docking and precise slow-speed maneuvering
- Concealed Outboard Propulsion™ with Verado® outboard engines provide a saltwater-capable and remarkably quiet ride
- Standard Dynamic Running Surface™ reduces minimum cruising speed, time to plane and bow rise
- Expansive cockpit seating encourages entertaining
- Includes an upper cockpit galley for convenient hosting
- Exquisite mid-ship, full-beam master stateroom with queen-size berth
- Convertible forward berth seating for additional entertaining or sleeping accommodations
- Sleeping accommodations for four

To see all available fabrics and finishes packages, visit the Sport Cruisers Fabrics, Finishes & Canvas section on page 116.



410

SUNDANCER®

LENGTH: 41' 6" / 12.65 m | BEAM: 13' 0" / 3.96 m
WEIGHT: 23,724 lb / 10,761 kg | FUEL: 254 gal / 961 L





FEATURES

- Optional joystick control and Zeus® drives enhance docking capabilities
- Large, open cockpit layout with abundant seating
- Lower salon with convertible aft entertainment zone
- Open or enclosed hardtop options
- Private master head with additional day head for guest use
- Oversized hull windows maximize interior natural light
- Well-equipped interior with luxurious cabinetry, flooring and textiles
- Electrically actuated engine-compartment hatch
- Electrically actuated extension and Posturepedic® backrest with Visco® mattress in forward stateroom
- Salon sofa converts to bed
- Standard 9kW Onan® generator
- Optional cockpit air conditioning
- Optional second stateroom

To see all available fabrics and finishes packages, visit the Sport Yachts Fabrics & Finishes section on page 118.



410 SUNDANCER®



450

SUNDANCER®

LENGTH: 45' 5" / 13.84 m | BEAM: 13' 2" / 4.01 m
WEIGHT: 24,362 lb / 11,050 kg | FUEL: 300 gal / 1,135 L





FEATURES

- Standard Axis® joystick control and optional Zeus® propulsion enhance docking capabilities
- Media room with theater seating, accent lighting and impressive LED TV with remote Blu-ray player
- Enclosed fiberglass hardtop with large sunroof
- Port and starboard dual helm seats
- Optional cockpit air conditioning
- Oversized hull windows maximize interior natural light
- Cockpit wet bar with sink and faucet, solid-surface countertop, stainless steel handrail, trash receptacle and storage cabinet
- Electrically actuated engine-compartment hatch
- Optional cockpit grill
- Standard generator with sound shield
- Large, extended swim platform with heavy-duty stainless steel swim ladder
- Electrically actuated extension and Posturepedic® backrest with Visco® mattress in forward stateroom

To see all available fabrics and finishes packages, visit the Sport Yachts Fabrics & Finishes section on page 118.



450 SUNDANCER®



470

SUNDANCER®

LENGTH: 47' 3" / 14.40 m | BEAM: 14' 0" / 4.27 m
WEIGHT: 34,300 lb / 15,558 kg | FUEL: 350 gal / 1,325 L





FEATURES

- Expansive sunroom with large sunroof and opposing seating
- Triple-pane sunroom door enables continuous flow between cockpit and sunroom
- Optional retractable cockpit sunshade for additional sun coverage
- SkyFlow™ atrium invites light and air deep into the boat
- Full-beam master stateroom with private head
- Exceptional helm ergonomics and visibility makes driving a breeze
- Standard twin V-drive or optional Zeus® propulsion both available with joystick control

To see all available fabrics and finishes packages, visit the Sport Yachts Fabrics & Finishes section on page 118.



470 SUNDANCER®



510

SUNDANCER®

LENGTH: 50' 10" / 15.49 m | BEAM: 14' 8" / 4.47 m
WEIGHT: 44,623 lb / 20,240 kg | FUEL: 400 gal / 1,514 L





FEATURES

- Optional joystick control and Zeus® propulsion enhance docking capabilities
- Enclosed solarium with abundant seating provides comfortable water-level entertainment
- SkyFlow™ atrium design for open, airy salon and galley
- Electronic cockpit sunshade
- Standard triple-pane sliding sunroom entry door
- Full-beam, mid-ship master stateroom with private head
- Additional stateroom and head offer comfortable accommodations for friends and family
- Optional third stateroom expands overnighting capabilities
- Climate-controlled sunroom
- Expansive pneumatic, tinted-glass sunroof
- Large U-shaped cockpit seating with storage below
- Sunroom wet bar with sink and faucet, solid-surface countertop, stainless steel handrail, trash receptacle, refrigerator and storage cabinet
- Lower L-shaped salon sofa with standard pull-out bed
- Optional cockpit grill
- Standard double-wide pivoting helm seat with armrests, teak footrest and heavy-duty, adjustable pedestals

To see all available fabrics and finishes packages, visit the Sport Yachts Fabrics & Finishes section on page 118.







510

FLY®

LENGTH: 50' 10" / 15.49 m | BEAM: 15' 4" / 4.67 m
WEIGHT: 44,523 lb / 20,240 kg | FUEL: 500 gal / 1,892 L





FEATURES

- Standard twin V-drive or optional Zeus® propulsion with joystick control
- Standard upper and lower helm stations
- Large, full-beam mid-ship master suite is an owner's oasis
- Two additional staterooms for comfortable friend and family accommodations
- Expansive flybridge with multiple seating, lounging and dining areas
- Continuous cockpit and salon interaction with multi-opening pocket door
- Standard transom lazarette or optional crew quarter
- Salon-level galley features dedicated storage, solid-surface counter tops and serving bar
- Two richly appointed heads
- Two available cockpit layouts (with and without portside seating)
- Standard radar arch and optional hardtop
- Sliding bridge entry hatch

To see all available fabrics and finishes packages, visit the Sport Yachts Fabrics & Finishes section on page 118.









540

SUNDANCER®

LENGTH: 54' 9" / 16.69 m | BEAM: 15' 3" / 4.65 m
WEIGHT: 49,032 lb / 22,241 kg | FUEL: 600 gal / 2,271 L





FEATURES

- Optional Zeus® propulsion with joystick control enhances docking capabilities
- Expansive galley with all the amenities
- Full-beam, mid-ship master stateroom with private head
- Additional stateroom and head for comfortable friend and family accommodations
- Joystick control available for all propulsion types
- Standard large flat-screen LED TV in the salon
- Large hull windows fill interior with natural light
- Luxurious materials used throughout, including Shoji doors to increase visual contrast
- Custom queen-size, pillowtop, innerspring mattresses for master and forward staterooms
- Standard interior LED lighting
- Electrically opening cockpit side windows

To see all available fabrics and finishes packages, visit the Yachts Fabrics & Finishes section on page 120.











OPTIONS AND SPECS

No two journeys are alike. Choose the propulsion options, creature comforts and finishes packages that best reflect your personal style. Technical accessories and life's luxuries help maximize the potential of your voyage. *Command the waters.*



FEATURES & OPTIONS

SPORT CRUISERS | 260 SUNDANCER-370 VENTURE



1



4



5



2

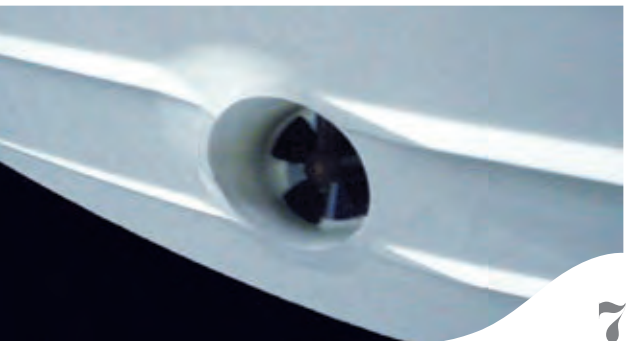


6



3

- 1. DIGITAL THROTTLE & SHIFT (DTS)**
Smoother and more responsive shifting from Mercury® and SmartCraft™.
- 2. FLATSCREEN TV**
Our entertainment centers boast flatscreen LED TVs with DVD players or Blu-ray™ (on select models).
- 3. BARBECUE GRILL**
A built-in electric grill made of corrosion-resistant stainless steel. Available on select models.
- 4. ROCKFORD FOSGATE® STEREO**
Rockford Fosgate featuring wireless Bluetooth™ connectivity.
- 5. OPENING WINDOW**
Select models offer an opening window for ventilation below deck.
- 6. ROCKFORD FOSGATE TRANSOM STEREO REMOTE**
Offering convenient control of the Rockford Fosgate stereos right at the water's edge.



7



8



9

- 7. BOW THRUSTER**
Controlled by a joystick at the helm for added maneuverability in tight spaces.
- 8. RAYMARINE® ELECTRONICS**
High-quality navigation aids from the industry leader, including widescreen options.
- 9. GOURMET TRANSOM STATION**
With a grill, a sink, storage drawers and speakers. Closes beneath a lid.
- 10. DYNAMIC RUNNING SURFACE™**
Enjoy reduced bow rise, improved stability and lower planing speed for even more control on the water.
- 11. BOW WASH DOWN**
Keep the anchor tackle clean with a concealed freshwater spigot and hose at the bow.
- 12. WINDLASS ANCHOR SYSTEM**
Rope and chain with foot switches, a galvanized anchor and stainless steel chute for long-term dependability.



10



11



12

FEATURES & OPTIONS

SPORT YACHTS & YACHTS | 410 SUNDANCER –540 SUNDANCER



1



2



3



4



5



6



7



8

1. TRANSOM PASSERELLE

Our easy-to-operate gangways let you and your guests get on and off your yacht without a single misstep.

2. HYDRAULIC SWIM PLATFORM

Launching and retrieving your secondary watercraft is push-button easy with our hydraulic marine lift swim platform.

3. SOLID-SURFACE COUNTERTOPS

Beauty and durability go hand-in-hand with our beautifully finished solid-surface countertops.

4. SKYFLOW DESIGN

Sea Ray's innovative SkyFlow atrium design brings light and air deep into the boat.

5. ADJUSTABLE FOREDECK SUNPADS

Sit up for a relaxing read or lay down to really soak up the sun with our sunpads and backrest.

6. SUNROOF SKYLIGHT

Let the light in with an expansive hardtop skylight.

7. AXIUS® AND ZEUS®

The Zeus® propulsion system comes with a helm joystick for docking, Skyhook® station-keeping technology and an integrated autopilot.

8. SMARTCRAFT® VESSELVIEW DISPLAY

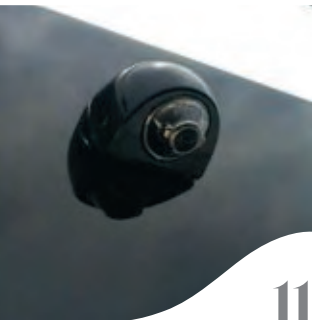
Keep in touch with your SmartCraft diagnostic instrumentation with this up-to-the-minute display.



9



10



11



12

9. CHINA CABINET

China cabinets on select Sea Ray® Yachts offer protection for our optional china place settings.

10. TEAK FLOORING

Optional teak flooring adds warmth and class to our Yacht series.

11. COMMANDVIEW

Sea Ray is the first marine manufacturer to integrate visualization into boat navigation. CommandView software stitches together multiple camera feeds for an integrated overhead view that links to your Raymarine navigation system.

12. ROCKFORD FOSGATE® STEREO

The Rockford Fosgate stereo system offers Bluetooth™ wireless connectivity and media inputs.

13. OVERSIZED HULL & DECK WINDOWS

Extra-large windows flood the cabins with natural light, making our yachts feel even more like home.

14. FLATSCREEN TV & PREMIUM SOUND

Our entertainment centers boast flatscreen LED Smart TVs with Blu-ray players, as well as Harman Kardon® home theatre systems coupled with Bose speakers.

15. INNERSPRING MATTRESS

You'll always wake up refreshed after a night spent sleeping on our high-quality, custom-made pillowtop innerspring mattresses.

16. TRIPLE-PANEL DOOR

Let the sunlight and sunset views in with the fully retractable triple-panel door (standard on the 510 Fly).



13



14



15



16

FABRICS,
FINISHES & CANVAS
SPORT CRUISERS |
260 SUNDANCER–370 VENTURE

PACKAGE /A

CABINETS & COUNTERTOP

CABINETS PRESTIGE CHERRY

COUNTERTOP MOCHA

FLOOR & WALL COVERINGS

WOOD FLOORING AUTUMN RIDGE OAT STRAW

CARPETING RAY OF SUNSHINE FROST

HEAD LINER DECATUR SUMMIT CHALK

HULL LINER OLYMPIA NEW LINEN ALABASTER

WINDOW COVERINGS

DRAPERY SUNBRELLA FREQUENCY SAND

V-BERTH & MID-CABIN FABRICS

BACK BOLSTER & BUNK COVER SUNBRELLA MAINSTREET LATTE

BACK BOLSTER & BUNK COVER CABO FRENCH ROAST

SALON SEATING ALLANTE PRODIGY CHAMPAGNE

ACCENT PILLOW METRO VANILLA

ACCENT PILLOW METRO NAVY

ACCENT PILLOW BOSS HARBOR

PACKAGE /B

CABINETS & COUNTERTOP

CABINETS CHESTNUT WOODLINE

COUNTERTOP VENUS

FLOOR & WALL COVERINGS

WOOD FLOORING AUTUMN RIDGE OAT STRAW

CARPETING RAY OF SUNSHINE FROST

HEAD LINER DECATUR SUMMIT CHALK

HULL LINER OLYMPIA NEW LINEN ALABASTER

WINDOW COVERINGS

DRAPERY SUNBRELLA FREQUENCY SAND

V-BERTH & MID-CABIN FABRICS

BACK BOLSTER & BUNK COVER SUNBRELLA MAINSTREET LATTE

BACK BOLSTER & BUNK COVER CABO FRENCH ROAST

SALON SEATING ALLANTE PRODIGY CHAMPAGNE

ACCENT PILLOW METRO CHAMPAGNE

ACCENT PILLOW METRO SAGE

ACCENT PILLOW GYPSY GRASS

PACKAGE /C

CABINETS & COUNTERTOP

CABINETS PECAN WOODLINE

COUNTERTOP VENUS

FLOOR & WALL COVERINGS

WOOD FLOORING AUTUMN RIDGE OAT STRAW

CARPETING RAY OF SUNSHINE FROST

HEAD LINER DECATUR SUMMIT CHALK

HULL LINER OLYMPIA NEW LINEN ALABASTER

WINDOW COVERINGS

DRAPERY SUNBRELLA FREQUENCY SAND

V-BERTH & MID-CABIN FABRICS

BACK BOLSTER & BUNK COVER SUNBRELLA MAINSTREET LATTE

BACK BOLSTER & BUNK COVER CABO FRENCH ROAST

SALON SEATING ALLANTE PRODIGY CHAMPAGNE

ACCENT PILLOW METRO LIPSTICK

ACCENT PILLOW METRO BORDEAUX

ACCENT PILLOW LUMINOUS MULBERRY

SPORT CRUISER HEIGHT DIMENSIONS		
MODEL	BRIDGE CLEARANCE HEIGHT FROM LWL TO TOP OF WINDSHIELD ^(A)	BRIDGE CLEARANCE HEIGHT FROM LWL TO TOP OF ANCHOR LIGHT WITH SPOILER/HARDTOP ^(A)
260 SUNDANCER	6'4" / 2.0 M	10'1" / 3.1 M ^(B)
280 SUNDANCER	6'6" / 2.0 M	10'1" / 3.1 M
310 SUNDANCER	6'4" / 2.0 M	9'6" / 2.9 M
330 SUNDANCER	7'8" / 2.4 M	10'3" / 3.1 M
350 SUNDANCER	7'4" / 2.35 M	10'5" / 3.2 M
370 SUNDANCER	7'9" / 2.4 M	10'6" / 3.3 M
370 VENTURE	9'2" / 2.8 M	11'2" / 3.4 M

A. LWL (Load Water Line) includes full fuel, full water, maximum capacity and is measured from the water line up. Measurement does not include props, rudders or stern drives. Always slow down and use caution when passing under a bridge or lower clearance structures.

B. Spoiler and hardtop are optional

MODEL	260	280	310	330	350	370	370V
STANDARD CANVAS							
Bimini top with boot & vertical storage	⊗						
Front, side & aft curtains, canvas storage bag		⊗	⊗	⊗	⊗	⊗	⊗
Sport spoiler with integrated aft sunshade		⊗	⊗	⊗	⊗		⊗
Fiberglass hardtop with canvas						⊗	
OPTIONAL PACKAGES							
CAMPER CANVAS PACKAGE Camper aft curtain (standard aft curtain is deleted if applicable), camper top with boot & vertical storage, front & side curtains (Bimini & camper)	⊗	⊗	⊗		⊗		
CANVAS PACKAGE Aft curtain, canvas storage bag, front & side curtains	⊗						
OPTIONAL CANVAS							
Cockpit cover	⊗	⊗	⊗	⊗	⊗	⊗	⊗
TOAST TWEED CANVAS	⊗	⊗	⊗	⊗	⊗	⊗	⊗
BLUE CANVAS	⊗	⊗	⊗	⊗			
Sport spoiler with integrated aft sunshade	⊗						
EXTENDED AFT BIMINI	⊗	⊗	⊗	⊗	⊗	⊗	⊗

Full canvas enclosure should only be used while the boat is at anchor or at rest and never when the engines or generator are running



FABRICS & FINISHES

SPORT YACHTS |
410 SUNDANCER-510 FLY

PACKAGE / **A**

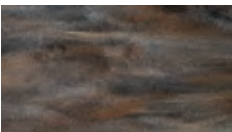
CABINETS & COUNTERTOP



CABINETRY
LIGHT CHERRY (GLOSS)



CABINETRY
DARK CHERRY (GLOSS)



COUNTERTOP
SORREL

FLOOR & WALL COVERINGS



STANDARD CARPETING
PONGEE



OPTIONAL CARPETING
SIENNA



HEAD LINER
ALLANTE SOLSTICE

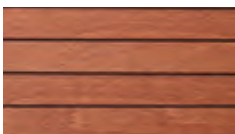


HULL LINER ACCENT
WILLOW DOE

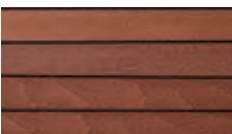
WINDOW COVERINGS



STANDARD BLINDS
ALLOY SILVER BULLION

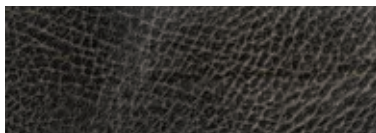


OPTIONAL WOOD
CHERRY



OPTIONAL WOOD
DARK CHERRY

MASTER STATEROOM FABRICS



HEADBOARD
ULTRALEATHER BRISA DISTRESSED



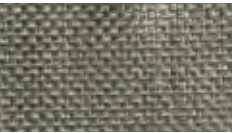
QUILT & SHAM SET
LOUNGE LATTE



ACCENT PILLOW
REGINA BARK



ACCENT PILLOW
MYSTERE MOCCASIN



COVERLET & ACCENT PILLOW
STOCKTON PEWTER

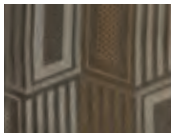
GUEST STATEROOM FABRICS



QUILT & SHAM SET
POP TAUPE



ACCENT PILLOW
MYSTERE MOCCASIN



ACCENT PILLOW
BEEHIVE TRUFFLE



COVERLET
STOCKTON PEWTER

THIRD STATEROOM FABRICS



QUILT & SHAM SET
POP TAUPE

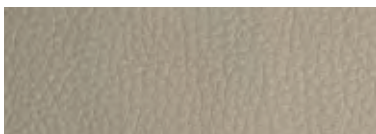


ACCENT PILLOW
MYSTERE MOCCASIN



ACCENT PILLOW
BEEHIVE TRUFFLE

SALON FABRICS



SOFA & OTTOMAN
PRIMERA RATTAN



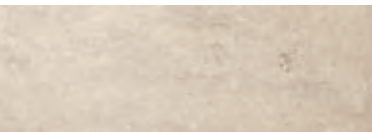
ACCENT PILLOW
BEEHIVE TRUFFLE

PACKAGE / **B**

CABINETS & COUNTERTOP



CABINETRY
WALNUT

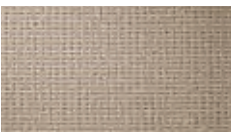


COUNTERTOP
CLAM SHELL

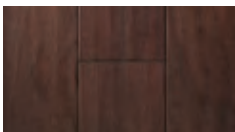
FLOOR & WALL COVERINGS



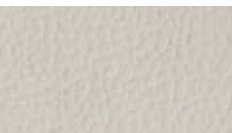
STANDARD CARPETING
CACAO



OPTIONAL CARPETING
SOUTH SEA PEARL



OPTIONAL WOOD FLOORING
ALLSPICE



HEAD LINER
ALLANTE SOLSTICE



HULL LINER
VOLANS TAUPE

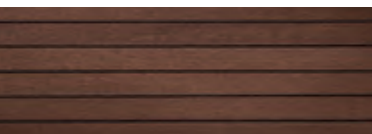


HULL LINER ACCENT
WILLOW TAUPE

WINDOW COVERINGS

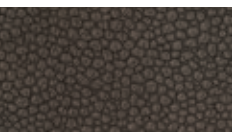


STANDARD BLINDS
ALLOY SILVER BULLION



OPTIONAL WOOD
WALNUT

MASTER STATEROOM FABRICS



HEADBOARD
ULTRALEATHER ECO-TECH
BROWNSTONE



QUILT & SHAM SET
XAVIER OWL



COVERLET & ACCENT PILLOW
SERAFINA CRUSH



ACCENT PILLOW
SENSATION PUMPKIN



ACCENT PILLOW
SENSATION PLUM



ACCENT PILLOW
ELEMENT SQUARE

GUEST STATEROOM FABRICS



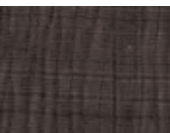
QUILT & SHAM SET
SEASIDE LINEN



ACCENT PILLOW
XAVIER CORAL

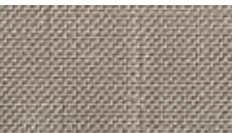


ACCENT PILLOW
ZULILY SNAPPY



COVERLET
SERAFINA CRUSH

THIRD STATEROOM FABRICS



QUILT & SHAM SET
SEASIDE LINEN

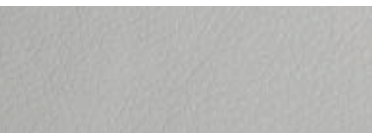


ACCENT PILLOW
XAVIER CORAL



ACCENT PILLOW
ZULILY SNAPPY

SALON FABRICS



SOFA & OTTOMAN
PRIMERA MIST



ACCENT PILLOW
ZULILY SNAPPY

PACKAGE / **C**

CABINETS & COUNTERTOP



CABINETRY
OAK



COUNTERTOP
NIGHT SKY

FLOOR & WALL COVERINGS



STANDARD CARPETING
INDIGO



OPTIONAL CARPETING
ERMITA

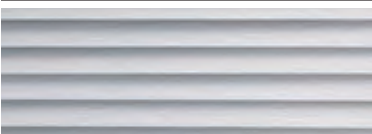


OPTIONAL WOOD
PEPPERCORN



HULL LINER ACCENT
WILLOW DOE

WINDOW COVERINGS



STANDARD BLINDS
ALLOY SILVER BULLION

MASTER STATEROOM FABRICS



HEADBOARD
ULTRALEATHER METRO-TECH
OBSIDIAN



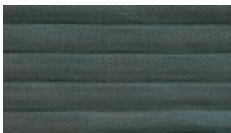
QUILT & SHAM SET
LOUNGE GRAY



COVERLET
QUILT



ACCENT PILLOW
TWANG CITRON



ACCENT PILLOW
TWANG SEAGLASS



ACCENT PILLOW
ELLIPSE NICKEL

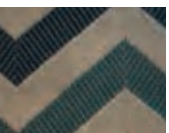
GUEST STATEROOM FABRICS



QUILT & SHAM SET
DAWSON PLATINUM



ACCENT PILLOW
MYSTERE PEACOCK



ACCENT PILLOW
DO DO PEACOCK



COVERLET
QUILT

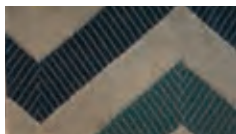
THIRD STATEROOM FABRICS



QUILT & SHAM SET
DAWSON PLATINUM

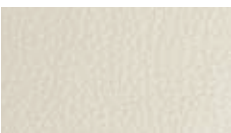


ACCENT PILLOW
MYSTERE PEACOCK

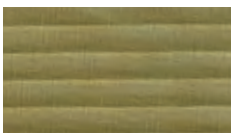


ACCENT PILLOW
DO DO PEACOCK

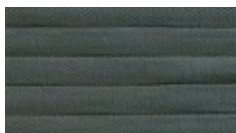
SALON FABRICS



SOFA & OTTOMAN
PRIMERA CHALK



ACCENT PILLOW
TWANG CITRON



ACCENT PILLOW
TWANG SEAGLASS

FABRICS & FINISHES

YACHTS | 540 SUNDANCER

PACKAGE / A

CABINETS & COUNTERTOP



CABINETRY
LIGHT CHERRY (GLOSS)



CABINETRY
DARK CHERRY (GLOSS)



COUNTERTOP
SORREL

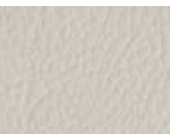
FLOOR & WALL COVERINGS



STANDARD CARPETING
PONGEE



OPTIONAL CARPETING
SIENNA



HEAD LINER
ALLANTE SOLSTICE

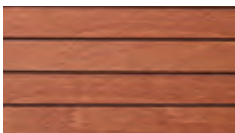


HULL LINER ACCENT
WILLOW DOE

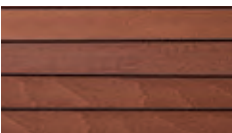
*OPTIONAL ROMAN SHADES AVAILABLE.



STANDARD BLINDS
ALLOY SILVER BULLION



OPTIONAL WOOD
CHERRY



OPTIONAL WOOD
DARK CHERRY

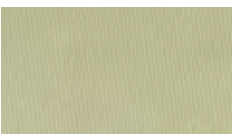
MASTER STATEROOM FABRICS



HEADBOARD
ULTRALEATHER BRISA
DISTRESSED

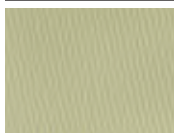


COVERLET & ACCENT PILLOW
REGINA BARK



ACCENT PILLOW
WHISPER TAN

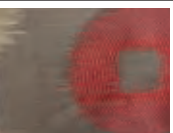
GUEST STATEROOM FABRICS



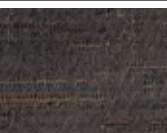
QUILT & SHAM SET
WHISPER TAN



ACCENT PILLOW
SILKARA SIENNA

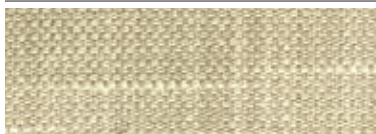


ACCENT PILLOW
KUMAR CINDER



COVERLET
REGINA BARK

THIRD STATEROOM FABRICS



QUILT & SHAM SET
EASTON WHEAT



ACCENT PILLOW
BANKS MINK

SALON FABRICS



ACCENT PILLOW
SILKARA SIENNA



ACCENT PILLOW
KUMAR CINDER

PACKAGE / B

CABINETS & COUNTERTOP

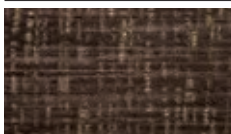


CABINETRY
WALNUT



COUNTERTOP
CLAM SHELL

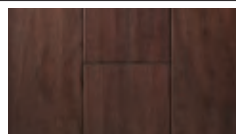
FLOOR & WALL COVERINGS



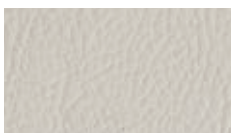
STANDARD CARPETING
CACAO



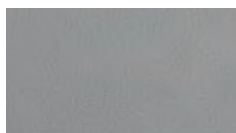
OPTIONAL CARPETING
SOUTH SEA PEARL



OPTIONAL WOOD FLOORING
ALLSPICE



HEAD LINER
ALLANTE SOLSTICE



HULL LINER
VOLANS TAUPE



HULL LINER ACCENT
WILLOW TAUPE

WINDOW COVERINGS

*OPTIONAL ROMAN SHADES AVAILABLE.

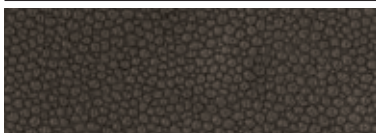


STANDARD BLINDS
ALLOY SILVER BULLION

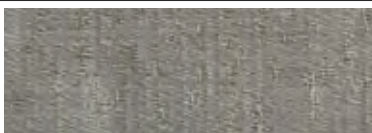


OPTIONAL WOOD
WALNUT

MASTER STATEROOM FABRICS



HEADBOARD
ULTRALEATHER ECO-TECH BROWNSTONE



QUILT & SHAM SET
REGINA SHELL



ACCENT PILLOW
FERRARA

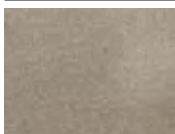


ACCENT PILLOW
SHIMMER BITTERSWEET



COVERLET
STOCKTON PEWTER

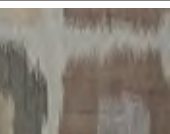
GUEST STATEROOM FABRICS



QUILT & SHAM SET
WHISPER TAUPE



ACCENT PILLOW
MARVEL IRIS

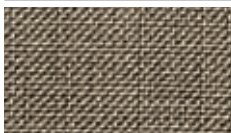


ACCENT PILLOW
VUVUZELA MOONSTONE



COVERLET
STOCKTON PEWTER

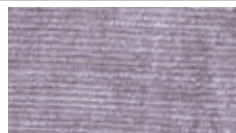
THIRD STATEROOM FABRICS



QUILT & SHAM SET
SEASIDE PEWTER

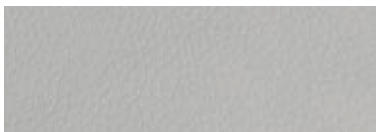


ACCENT PILLOW
ANTIGUA CHOCOLATE



ACCENT PILLOW
WALDORF LILAC

SALON FABRICS



SOFA & OTTOMAN
PRIMERA MIST



ACCENT PILLOW
VUVUZELA MOONSTONE

PACKAGE / C

CABINETS & COUNTERTOP



CABINETRY
OAK

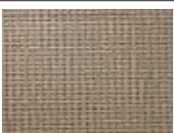


COUNTERTOP
NIGHT SKY

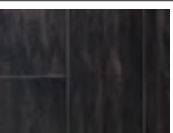
FLOOR & WALL COVERINGS



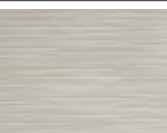
STANDARD CARPETING
INDIGO



OPTIONAL CARPETING
ERMITA



OPTIONAL WOOD
PEPPERCORN



HULL LINER ACCENT
WILLOW DOE

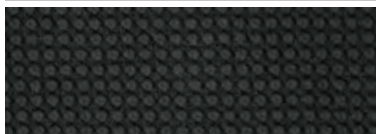
WINDOW COVERINGS

*OPTIONAL ROMAN SHADES AVAILABLE.

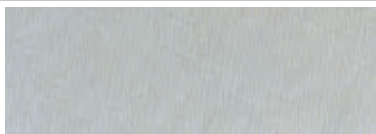


STANDARD BLINDS
ALLOY SILVER BULLION

MASTER STATEROOM FABRICS



HEADBOARD
ULTRALEATHER METRO-TECH OBSIDIAN



QUILT & SHAM SET
WHISPER IVORY



ACCENT PILLOW
PANDROS BLACK



ACCENT PILLOW
SHIMMER MAGIC



COVERLET
XAVIER CHESNUT

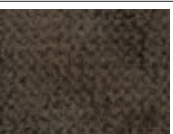
GUEST STATEROOM FABRICS



QUILT & SHAM SET
RANGOON COCONUT



ACCENT PILLOW
HASBRO BLACK



ACCENT PILLOW
MYSTERE CARAFE



COVERLET
XAVIER CHESNUT

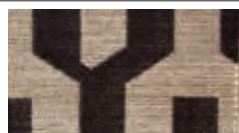
THIRD STATEROOM FABRICS



QUILT & SHAM SET
ZANTE WHITE



ACCENT PILLOW
MYSTERE MAGIC



ACCENT PILLOW
VERONA

SALON FABRICS








ACCENT PILLOW
HASBRO BLACK

PROPULSION

SPORT CRUISERS, SPORT YACHTS & YACHTS | 260 SUNDANCER –540 SUNDANCER

Sea Ray® partners with the leading marine engine manufacturers to provide our Sport Cruiser, Sport Yacht and Yacht owners with unsurpassed power, reliability and support around the world.

	<p>Because Sea Ray has achieved Mercury® Installation Quality Certification, all new MerCruiser®-powered Sea Ray boats come with a two-year limited engine warranty. SeaCore™ engines come with up to a four-year limited engine and corrosion warranty*. See your Sea Ray Dealer for details.</p> <p>*SeaCore warranty may vary by country. See your Sea Ray Dealer for details.</p>
	<p>Mercury MerCruiser builds a gas engine for almost every boat application, from formidable MAG sterndrives to low-maintenance Horizon V-drives. Its innovative SeaCore system, available on select models, offers best-in-class corrosion protection with hard-coat anodizing, closed cooling and widespread use of stainless steel components.</p>
	<p>Mercury engineers build and test reliability into all Mercury outboards because reliable engine performance is a must. Before an outboard is sent to test in the real world, it endures test after test in a state-of-the-art testing center all so you can take to the water with confidence every time, no matter what. Because when you're on the water, reliability is more than just a word, it's peace of mind.</p>
	<p>Yanmar® diesel engines are among the toughest and most durable power available for pleasure boating. With regional headquarters in the U.S., Europe, Southeast Asia and Japan, plus full support facilities in more than 130 countries, Yanmar is dedicated to meeting the service needs of boaters everywhere.</p>
	<p>Cummins Diesel®, the premier choice for diesel power, combines world-class research and engineering expertise, an exceptional range of products and an ever-growing global service network. Its six-cylinder Quantum® series delivers quiet, fuel-efficient power along with unmatched durability for a long life.</p>

STERNDRIVES

- > The drives can be adjusted to fine-tune the running altitude of the boat. This can shorten planing time, improve speed and fuel efficiency and help provide a smooth ride in variable sea conditions.
- > Trimming the drives up can allow for easier and safer beaching or anchoring in shallow water.
- > SeaCore technology, available on select MerCruiser models, protects against the harsh marine environment with anti-corrosion features.
- > When the captain turns the wheel, the entire drive turns, resulting in superior handling and maneuverability at speed.

V-DRIVES

- > The underwater running gear is simple and durable—just a prop, rudder, shaft and strut—for minimum upkeep and reduced corrosion.
- > A V-drive boat usually has a shallower draft than a sterndrive with the drives all the way down.
- > The props are forward of the transom, providing excellent handling in close-quarters, such as when docking.
- > The transmission is mounted inside the boat. This allows easy access for maintenance without having to remove the boat from water.

AXIUS/JOYSTICK PILOTING

- > Provides multi-directional thrust for 360-degree maneuverability and unmatched handling at slow speeds.
- > The intuitive helm joystick allows operators of any skill level to dock the boat with confidence and ease.
- > Axius is shown to deliver dramatic advantages in fuel economy, range, time to plane and top speed.
- > Comes with the Skyhook® Electronic Anchor station-keeping feature, which works at the push of a button.

OUTBOARDS

- > The Mercury Verado® features a unique Long Bolt Engine Design to keep the powerhead in a state of constant compression, with rubber dampening to minimize the effects of engine vibration. Fewer parts moving means fewer chances for wear and tear.
- > All Verado FourStroke outboard engines feature a valve train with a unique, robust, overhead cam design; making it incredibly durable and unlike many competitors' four-strokes, maintenance-free for life.
- > For superior corrosion protection, Mercury engines are built with more stainless steel components, which translates to saltwater durability, longer intervals between maintenance and lower cost of ownership.

GET A HANDLE ON MANEUVERABILITY

Sea Ray offers joystick propulsion systems on almost all of our Yacht models, providing owners with more carefree boating than ever before. Each technology has been thoroughly tested and sea trialed, ensuring control with confidence.

With Zeus®, multidirectional thrust is provided by twin Cummins Diesel inboards and independent, rear-facing pod drives. The joystick controlling the

system is touch-sensitive for intuitive docking, and the drives convert considerable performance for faster speeds and improved fuel efficiency. Rear-facing pod drives offer distinct advantages over forward-facing drives because they are protected by the gear case and skeg, thereby enhancing safety.



CUMMINS® INBOARD JOYSTICK

The Cummins Inboard Joystick is a docking system designed specifically for use with traditional inboard engines and transmissions. With an unrivaled expertise in joystick control, Cummins uses a new class of DC thrusters with extended run time capability to bring your yacht to a new level of error-free navigation in close quarters. Cummins also backs up every component in the inboard joystick system with the same warranty and global service and support network as Cummins engines. You will be surprised where you can dock with the confidence Cummins Inboard Joystick delivers.

ENGINE SPECS

SPORT CRUISERS | 260 SUNDANCER–370 VENTURE

MERCUISER® GAS STERNDRIVES						MERCUISER® GAS INBOARDS	GAS OUTBOARDS	
ENGINE	4.3L MPI ECT	4.5L MPI ECT	5.0L MPI ECT	350 MAG ECT*	8.2 MAG ECT*	350 MAG HORIZON ECT	8.2 HORIZON ECT	MERCURY® VERADO®
HP/KW (PROP HORSEPOWER)	220/164	250/186	260/194	300/224	380/283	300/224	375/280	300/224
DISPLACEMENT (LITERS/CID)	4.3/262	4.5/275	5.0/305	5.7/350	8.2/502	5.7/350	8.2/502	2.6/158
CYLINDERS	V6	V6	V8	V8	V8	V8	V8	INLINE 6
MAX RPM (WOT)	4,400–4,800	4,800–5,200	4,600–5,000	4,800–5,200	4,400–4,800	4,600–5,000	4,200–4,600	5,800–6,400
FUEL CONSUMPTION (GPH AT CRUISE/PER ENGINE)	9.0	10.2	10.9	11.6	20.6	12.0	21.0	10.0
DRIVE/TRANSMISSION	BRAVO III	BRAVO III	BRAVO III	BRAVO III	BRAVO III	ZF63	ZF63	XL-25
WEIGHT (LB)	913	864	994	1,013	1,080	948	1,080	635

Readings are from actual dynamometer tests, as provided by the engine manufacturer. A specific boat's performance will be affected by water conditions, altitude, condition of boat and actual load.

*SeaCore™ System corrosion protection package is offered as an option.

ENGINE SPECS

SPORT YACHTS & YACHTS | 410 SUNDANCER–540 SUNDANCER

MERCUISER® GAS STERNDRIVES			CUMMINS® DIESEL		
ENGINE	8.2 MAG ECT*	8.2 MAG HO ECT*	QSB6.7-380HO	QSB6.7-425HO	QSB6.7-480HO
CRANKSHAFT HP	N/A	N/A	380	425	480
PROPSHAFT RATED HP	380	430	364	407	459
KILOWATT PROPSHAFT RATED	283	321	272	304	338
DISPLACEMENT (LITERS/CID)	8.2/502	8.2/502	6.7/408	6.7/408	6.7/408
CYLINDERS	V8	V8	INLINE 6	INLINE 6	INLINE 6
COMPRESSION RATIO	8.75:1	8.75:1	17.2:1	16.7:1	16.7:1
FULL THROTTLE OPERATING RANGE (RPM)	4,400–4,800	4,600–5,000	3,000	3,000	3,300
FUEL CONSUMPTION (GPH) – CRUISE	3,250/16.0	3,500/18.5	2,700/15.9	2,700/18.8	3,000/21.3
FUEL CONSUMPTION (GPH) – WOT	4,800/29.5	5,000/33.0	3,000/19.5	3,000/21.7	3,300/25.4
DRIVE/TRANSMISSION	BRAVO I/IX AXIUS	BRAVO I/IX AXIUS	ZF 85 SERIES	ZF 85 SERIES	ZF 85 SERIES
WEIGHT (LB)	1,205	1,205	1,450	1,450	1,450
FUEL SYSTEM	MPI	MPI	HPCR	HPCR	HPCR

CUMMINS® DIESEL			
ENGINE	QSC8.3-550	QSC8.3-600	QSM11-715
CRANKSHAFT HP	550	600	715
PROPSHAFT RATED HP	526	576	684
KILOWATT PROPSHAFT RATED	405	442	526
DISPLACEMENT (LITERS/CID)	8.3 L	8.3 L	10.8 L
CYLINDERS	INLINE 6	INLINE 6	INLINE 6
COMPRESSION RATIO	16.3:1	16:3:1	16:3:1
FULL THROTTLE OPERATING RANGE (RPM)	3000	3,000	2,500
FUEL CONSUMPTION (GPH) – CRUISE	2,600/19.3	2,600/20.3	2,300/29.1
FUEL CONSUMPTION (GPH) – WOT	3,000/29.8	3,000/32.5	2,500/37.7
DRIVE/TRANSMISSION	ZF 286 SERIES	ZF 286 SERIES	ZF 325 IV
WEIGHT (LB)	1,975	1,975	2,620
BORE & STROKE	114MM X 135MM	114MM X 135MM	125MM X 147MM

*SeaCore™ System corrosion protection package is offered as an option.

Readings are from actual dynamometer tests, as provided by the engine manufacturer. A specific boat's performance will be affected by water conditions, altitude, condition of boat and actual load.

*Non-ECT engine available outside the U.S.

260

SUNDANCER®



26'7" 8.10 M
OVERALL LENGTH WITH
STANDARD SWIM PLATFORM

- 69 gal / 261 L
- 20 gal / 76 L
- 4 people

BEAM
8'6"/2.59 M
DRAFT (STERNDRIIVE DOWN & UP)
41"/104 CM & 24"/61 CM
DRY WEIGHT
6,667 LB/3,024 KG
DEADRISE
19°
HOLDING TANK (OPT.)
18 GAL/68 L

- ARCTIC WHITE
- ONYX
- SEA RAY BLUE
- MOJAVE TAN

280

SUNDANCER®



28'8" 8.74 M
OVERALL LENGTH WITH
INTEGRAL SWIM PLATFORM

30'6" 9.29 M
OVERALL LENGTH WITH
OPTIONAL EXTENDED SWIM PLATFORM

- 85 gal / 322 L
- 28 gal / 106 L
- 4 people

BEAM
8'10"/2.69 M
DRAFT (STERNDRIIVE DOWN & UP)
42"/107 CM & 24"/60 CM
DRY WEIGHT
8,211 LB/3,724 KG
DEADRISE
19°
HOLDING TANK
28 GAL/106 L

- ARCTIC WHITE
- ONYX
- SEA RAY BLUE
- MOJAVE TAN

310

SUNDANCER®



31'0" 9.45 M
OVERALL LENGTH WITH
INTEGRAL SWIM PLATFORM

33'2" 10.11 M
OVERALL LENGTH WITH
OPTIONAL EXTENDED SWIM PLATFORM

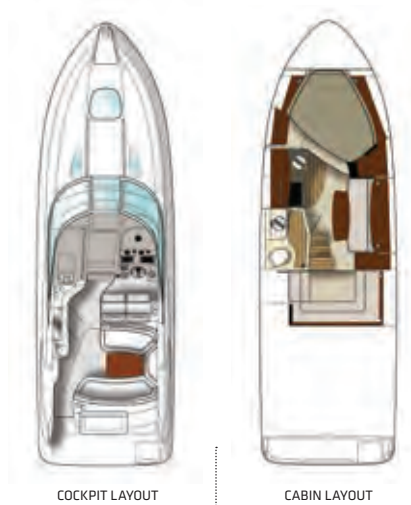
- 125 gal / 473 L
- 28 gal / 106 L
- 6 people

BEAM
10'0"/3.05 M
DRAFT (STERNDRIIVE DOWN & UP)
41"/104 CM & 31"/79 CM
DRY WEIGHT
11,630 LB/5,275 KG
DEADRISE
21°
HOLDING TANK
28 GAL/106 L

- ARCTIC WHITE
- ONYX
- SEA RAY BLUE
- MOJAVE TAN

330

SUNDANCER®



33'4" 10.16 M
OVERALL LENGTH WITH
INTEGRAL SWIM PLATFORM

35'8" 10.87 M
OVERALL LENGTH WITH
OPTIONAL EXTENDED SWIM PLATFORM

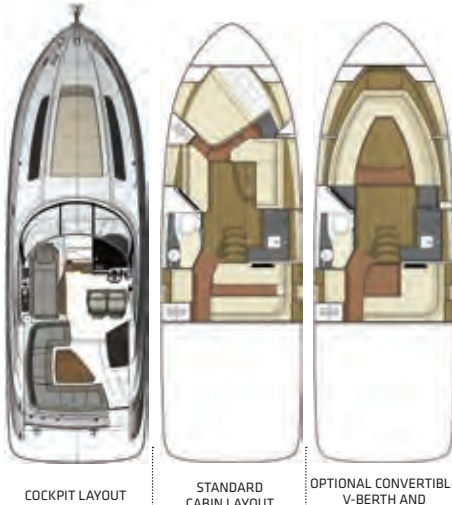
- 200 gal / 757 L
- 35 gal / 132 L
- 6 people

BEAM
10'5"/3.18 M
DRAFT (STERNDRIIVE DOWN & UP)
35"/89 CM & 28"/71 CM
DRAFT (INBOARDS)
35"/88 CM
DRY WEIGHT
13,334 LB/6,048 KG
DEADRISE
21°
HOLDING TANK
28 GAL/106 L

- ARCTIC WHITE
- ONYX
- SEA RAY BLUE
- MOJAVE TAN

350

SUNDANCER®



35'0" 10.67 M
OVERALL LENGTH WITH
INTEGRAL SWIM PLATFORM

37'7" 11.45 M
OVERALL LENGTH WITH
OPTIONAL EXTENDED SWIM PLATFORM

- 230 gal / 871 L
- 40 gal / 151 L
- 6 people

BEAM
11'4"/3.45 M
DRAFT (STERNDRIIVE DOWN & UP)
40"/102 CM & 30"/76 CM
DRAFT (INBOARDS)
38"/97 CM
DRY WEIGHT
15,780 LB/7,158 KG
DEADRISE
20°
HOLDING TANK
28 GAL/106 L

- ARCTIC WHITE
- ONYX
- SEA RAY BLUE
- MOJAVE TAN

370 SUNDANCER®



COCKPIT LAYOUT

STANDARD CABIN LAYOUT

OPTIONAL TWO-STATEROOM CABIN LAYOUT

37'6" 11.43 M

OVERALL LENGTH WITH STANDARD INTEGRAL SWIM PLATFORM

39'4" 11.99 M

OVERALL LENGTH WITH OPTIONAL EXTENDED SWIM PLATFORM

40'6" 12.34 M

OVERALL LENGTH WITH OPTIONAL HYDRAULIC SWIM PLATFORM

 **250 gal / 946 L**

 **50 gal / 189 L**

 **6 people**

BEAM
12'0" / 3.66 M

DRAFT (STERNDRIIVE DOWN & UP)
37" / 94 CM & 30" / 76 CM

DRAFT (INBOARDS)
39" / 99 CM

DRY WEIGHT
18,064 LB / 8,194 KG

DEADRISE
21°

HOLDING TANK
28 GAL / 106 L

 ARCTIC WHITE  ONYX
 SEA RAY BLUE  MOJAVE TAN

370 VENTURE®



COCKPIT LAYOUT

CABIN LAYOUT

37'2" 11.33 M

OVERALL LENGTH WITH STANDARD EXTENDED SWIM PLATFORM

 **222 gal / 840 L**

 **31 gal / 117 L**

 **4 people**

BEAM
11'3" / 3.43 M

DRAFT (OUTBOARDS DOWN & UP)
36" / 91 CM & 26" / 66 CM

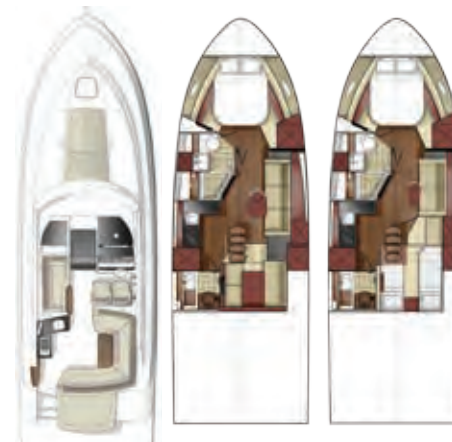
DRY WEIGHT
15,840 LB / 7,185 KG

DEADRISE
18°

HOLDING TANK
28 GAL / 106 L

 ARCTIC WHITE  ONYX
 SEA RAY BLUE  MOJAVE TAN

410 SUNDANCER®



COCKPIT LAYOUT

STANDARD CABIN LAYOUT

OPTIONAL TWO-STATEROOM CABIN LAYOUT

41'6" 12.65 M

OVERALL LENGTH WITH EXTENDED SWIM PLATFORM

 **254 gal / 961 L**

 **60 gal / 227 L**

 **6 people**

BEAM
13'0" / 3.96 M

DRAFT (INBOARDS)
47" / 119 CM

DRAFT (ZEUS®)
50" / 127 CM

DRY WEIGHT (INBOARDS)
23,724 LB / 10,761 KG

DRY WEIGHT (ZEUS)
25,875 LB / 11,737 KG

DEADRISE
21°

 ARCTIC WHITE  HORIZON
 BLUE  PATINA
 BLACK

450 SUNDANCER®



COCKPIT LAYOUT


CABIN LAYOUT

45'5" 13.84 M

OVERALL LENGTH WITH EXTENDED SWIM PLATFORM

 **300 gal / 1,135 L**

 **70 gal / 265 L**

 **6 people**

BEAM
13'2" / 4.01 M

DRAFT (AXIUS® DOWN & UP)
38" / 97 CM & 32" / 81 CM

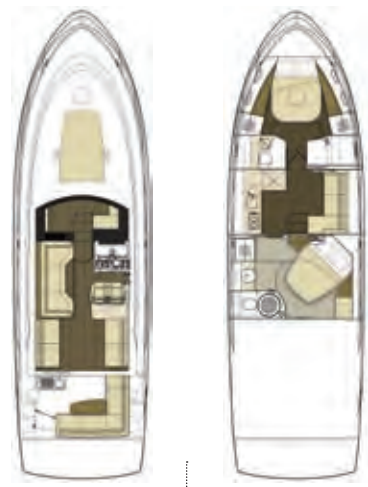
DRAFT (ZEUS®)
46" / 117 CM

DRY WEIGHT (AXIUS)
24,362 LB / 11,050 KG

DEADRISE
19°

 ARCTIC WHITE  HORIZON
 BLUE  PATINA
 BLACK

470 SUNDANCER®



COCKPIT LAYOUT

CABIN LAYOUT

47'3" 14.40 M

OVERALL LENGTH WITH
EXTENDED SWIM PLATFORM

 **350 gal** / 1,325 L

 **100 gal** / 378 L

 **6 people**

BEAM
14'0" / 4.27 M

DRAFT (V-DRIVES)
51" / 130 CM

DRAFT (ZEUS®)
48" / 122 CM

DRY WEIGHT (V-DRIVES)
34,300 LB / 15,558 KG

DRY WEIGHT (ZEUS)
33,700 LB / 15,286 KG

DEADRISE
19°

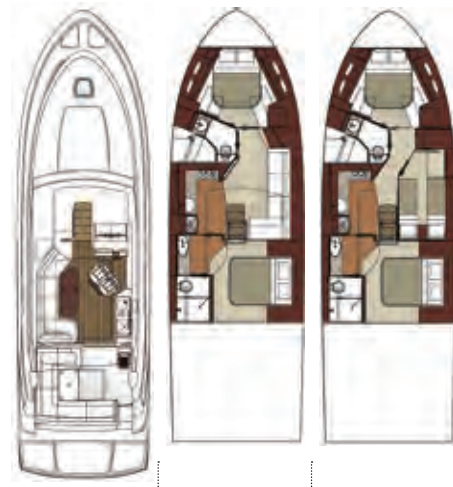
-  ARCTIC WHITE

 BLUE

 BLACK
-  HORIZON

 PATINA

510 SUNDANCER®



COCKPIT LAYOUT

STANDARD
CABIN LAYOUT

OPTIONAL
THREE-STATEROOM
CABIN LAYOUT

50'10" 15.49 M

OVERALL LENGTH WITH
EXTENDED SWIM PLATFORM

50'10" 15.49 M

OVERALL LENGTH WITH
OPTIONAL HYDRAULIC SWIM PLATFORM

 **400 gal** / 1,514 L

 **110 gal** / 416 L

 **6/8 people / optional**

BEAM
14'8" / 4.47 M


DRAFT (INBOARDS)
49" / 124 CM

DRAFT (ZEUS®)
47" / 119 CM

DRY WEIGHT (INBOARDS)
41,423 LB / 18,789 KG

DRY WEIGHT (ZEUS)
41,423 LB / 18,789 KG

DEADRISE
19°

-  ARCTIC WHITE

 BLUE

 BLACK
-  HORIZON

 PATINA

510 FLY®



BRIDGE

STANDARD
CABIN LAYOUT

STANDARD
SALON LAYOUT

50'10" 15.49 M

OVERALL LENGTH WITH
EXTENDED SWIM PLATFORM

50'10" 15.49 M

OVERALL LENGTH WITH
OPTIONAL HYDRAULIC SWIM PLATFORM

 **500 gal** / 1,892 L

 **130 gal** / 492 L

 **8 people**

BEAM
15'4" / 4.67 M

DRAFT (V-DRIVES)
52" / 132 CM

DRAFT (ZEUS®)
50" / 127 CM

DRY WEIGHT (V-DRIVES)
44,623 LB / 20,240 KG


DRY WEIGHT (ZEUS)
46,800 LB / 21,228 KG

DEADRISE
17°

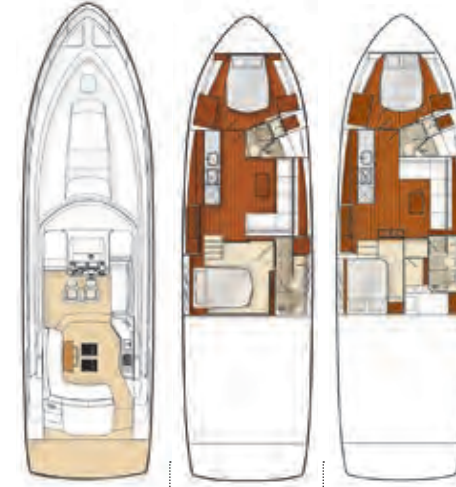
-  ARCTIC WHITE

 BLUE

 BLACK
-  HORIZON

 PATINA

540 SUNDANCER®



COCKPIT LAYOUT

STANDARD
CABIN LAYOUT

OPTIONAL
THREE-STATEROOM
CABIN LAYOUT

54'9" 16.70 M

OVERALL LENGTH WITH
EXTENDED SWIM PLATFORM

54'9" 16.70 M

OVERALL LENGTH WITH
OPTIONAL HYDRAULIC SWIM PLATFORM

 **600 gal** / 2,271 L

 **150 gal** / 568 L

 **6/8 people / optional**

BEAM
15'3" / 4.65 M

DRAFT (INBOARDS)
51" / 130 CM

DRAFT (ZEUS®)
49" / 124 CM

DRY WEIGHT (INBOARDS)
49,032 LB / 22,241 KG

DRY WEIGHT (ZEUS)
46,901 LB / 21,274 KG

DEADRISE
18°

-  ARCTIC WHITE

 BLUE

 BLACK
-  HORIZON

 PATINA

THE COMPLETE **SEARAY**® LINEUP

In addition to the premium Sport Cruisers, Sport Yachts and Yachts in this catalog, Sea Ray offers truly world-class Sport Boats.



19 ^{SPX® IO/OB}	OVERALL LENGTH WITH INTEGRAL SWIM PLATFORM 19'6" / 5.94 M / 19'6" / 5.94 M	BEAM: 8'4" / 2.54 M DRY WEIGHT (IO/OB): 2,728 LB / 1,237 KG / 2,494 LBS / 1,131 KG PERSONS CAPACITY: TBD
21 ^{SPX® IO/OB}	OVERALL LENGTH WITH INTEGRAL SWIM PLATFORM 21'6" / 6.55 M / 21'6" / 6.55 M	BEAM: 8'6" / 2.59 M DRY WEIGHT (IO/OB): 3,400 LB / 1,542 KG / 3,400 LB / 1,542 KG PERSONS CAPACITY: TBD
210 ^{SLX®}	OVERALL LENGTH WITH INTEGRAL SWIM PLATFORM 21'0" / 6.40 M	BEAM: 8'3" / 2.50 M DRY WEIGHT: 3,642 LB / 1,652 KG PERSONS CAPACITY: 10
230 ^{SLX®}	OVERALL LENGTH WITH INTEGRAL SWIM PLATFORM 23'0" / 7.00 M	BEAM: 8'6" / 2.59 M DRY WEIGHT: 4,100 LB / 1,859 KG PERSONS CAPACITY: 11
250 ^{SLX®}	OVERALL LENGTH WITH INTEGRAL SWIM PLATFORM 26'6" / 8.08 M	BEAM: 8'6" / 2.59 M DRY WEIGH : 5,880 LB / 2,667 KG PERSONS CAPACITY: 10
270 ^{SLX®}	OVERALL LENGTH WITH INTEGRAL SWIM PLATFORM 28'6" / 8.69 M	BEAM: 9'0" / 2.74 M DRY WEIGHT: 5,470 LB / 2,481 KG PERSONS CAPACITY: 12
300 ^{SLX®}	OVERALL LENGTH WITH INTEGRAL SWIM PLATFORM 29'6" / 8.99 M	BEAM: 9'8" / 2.95 M DRY WEIGHT : 7,700 LB / 3,493 KG PERSONS CAPACITY: 12
350 ^{SLX®}	OVERALL LENGTH WITH INTEGRAL SWIM PLATFORM 34'6" / 10.50 M	BEAM: 10'6" / 3.20 M DRY WEIGHT: 11,787 LB / 5,347 KG PERSONS CAPACITY: 18
220 ^{SUNDECK® IO/OB}	OVERALL LENGTH WITH EXTENDED SWIM PLATFORM 22'6" / 6.85 M / 22'0" / 6.71 M	BEAM: 8'4" / 2.56 M DRY WEIGHT (IO/OB): 4,200 LB / 1,905 KG / 3,790 LB / 1,719 KG PERSONS CAPACITY: 12
240 ^{SUNDECK® IO/OB}	OVERALL LENGTH WITH EXTENDED SWIM PLATFORM 24'6" / 7.46 M / 24'0" / 7.30 M	BEAM: 8'6" / 2.59 M DRY WEIGHT (IO/OB): 4,740 LB / 2,150 KG / 3,909 LB / 1,773 KG PERSONS CAPACITY: 13
270 ^{SUNDECK® IO/OB}	OVERALL LENGTH WITH EXTENDED SWIM PLATFORM 27'2" / 8.30 M / 27'2" / 8.30 M	BEAM: 8'6" / 2.59 M DRY WEIGHT (IO/OB): 5,925 LB / 2,687 KG / 5,925 LBS / 2,687 KG PERSONS CAPACITY: 15
290 ^{SUNDECK®}	OVERALL LENGTH WITH EXTENDED SWIM PLATFORM 29'2" / 8.90 M	BEAM: 9'0" / 2.74 M DRY WEIGHT: TBD PERSONS CAPACITY: 17

INCREDIBLE CRAFTSMANSHIP. IMPECCABLE STYLE. COMMANDING PERFORMANCE.

WELCOME TO INSPIRED LUXURY

Ushering in a new era of world-class yachting, the Sea Ray L-Class was founded on the philosophy that style thrives on substance.



SEA RAY® BUILT THE L-CLASS® ATOP A FOUNDATION of commanding capability, rock-solid reliability and world-class craftsmanship. There are five guiding tenets to L-Class design:

DESIGN SHOULD HAVE MEANING. L-Class offers seamless anticipation of your every need, with features and finishes that fit you remarkably. This is luxury with soul.

TRUE PERFORMANCE IS TRUE LUXURY. Smooth. Solid. Effortless. Putting you in complete command.

NEVER COMPROMISE COMFORT. L-Class delivers sophisticated and comprehensive relaxation to set you fully at ease. These yachts will exceed your every expectation without compromises or qualifiers.

THERE ARE NO LITTLE THINGS. No detail has been overlooked, from the skillful craftsmanship delivering true seaworthiness down to every last stitch of upholstery.

TRUE CRAFTSMANSHIP ENDURES. It's only a lost art if you stop doing it. Signature Sea Ray craftsmanship offers a level of skill and artistry unmatched in the luxury yachting world.

With a comprehensive three-year bow-to-stern warranty, a concierge-led buying experience and personalized delivery—not to mention a 24-hour dedicated customer service representative and incomparable support throughout North America—L-Class invites you to enjoy an entirely new kind of ownership experience.

L590

OVERALL LENGTH
58'10" / 17.93 M
BEAM: 16'0" / 4.87 M
DRY WEIGHT: TBD

L590^{FLY}

OVERALL LENGTH
58'10" / 17.93 M
BEAM: 16'0" / 4.87 M
DRY WEIGHT: TBD

L650

OVERALL LENGTH WITH EXTENDED PLATFORM
65'1" / 19.84 M
BEAM: 17'2" / 5.23 M
DRY WEIGHT: 73,500 LBS / 33,339 KG

L650^{FLY}

OVERALL LENGTH WITH EXTENDED PLATFORM
65'1" / 19.84 M
BEAM: 17'2" / 5.23 M
DRY WEIGHT: 80,500 LBS / 36,514 KG



L590



L590 Fly



L650



L650 Fly



Sea Ray® is proud to partner with NBOA as our official marine insurance and towing service provider. We share a commitment to delivering premium on-water experiences that are joyful and worry-free. Through NBOA, Sea Ray owners have access to exclusive insurance rates and select discounts, plus emergency dispatch and free on-water towing services for the first year.

U.S. & CANADA OFFICE
800 S. Gay St.
Knoxville, TN 37929
USA
Phone: +1 (865) 522-4181
www.searay.com

EUROPE, AFRICA & THE MIDDLE EAST OFFICE
Oude Haagseweg 47
1066 BV Amsterdam
The Netherlands
Phone: +31 (20) 511-0011
Email: amsterdam@brunswick.com

INTERNATIONAL OFFICE
800 S. Gay St.
Knoxville, TN 37929
USA
Phone: +1 (865) 522-4181
Email: srint@searay.com



WWW.SEARAY.COM

NOTE: NOT ALL ACCESSORIES SHOWN IN PICTURES OR DESCRIBED HEREIN ARE STANDARD EQUIPMENT OR EVEN AVAILABLE AS OPTIONS. OPTIONS AND FEATURES ARE SUBJECT TO CHANGE WITHOUT NOTICE. NOT ALL MODEL YEAR BOATS MAY CONTAIN ALL THE FEATURES OR MEET THE SPECIFICATIONS DESCRIBED HEREIN. CONFIRM AVAILABILITY OF ALL ACCESSORIES AND EQUIPMENT WITH AN AUTHORIZED SEA RAY DEALER PRIOR TO PURCHASE. PRINTED IN THE U.S.A. OCTOBER 2014 © SEA RAY BOATS.